

The Adult ESOL Program provides basic English language and life skills instruction to county residents whose native language is not English. This program is unable to provide services to F1 and J1 visa holders. Please see the FAQ section of our website for more details.

## ESOL FOR HEALTHCARE JOBS

- ***Are you looking for a new or better job in healthcare?***
- ***Do you want to learn more English for your healthcare job?***

**If you answered “yes” to these questions, and qualify, this training is for YOU!**

**ESOL for Healthcare will help you learn the English and basic skills you need to work in entry-level healthcare jobs.**

**If interested, you MUST ATTEND one of the ESOL for Healthcare Jobs orientations and testing sessions.**

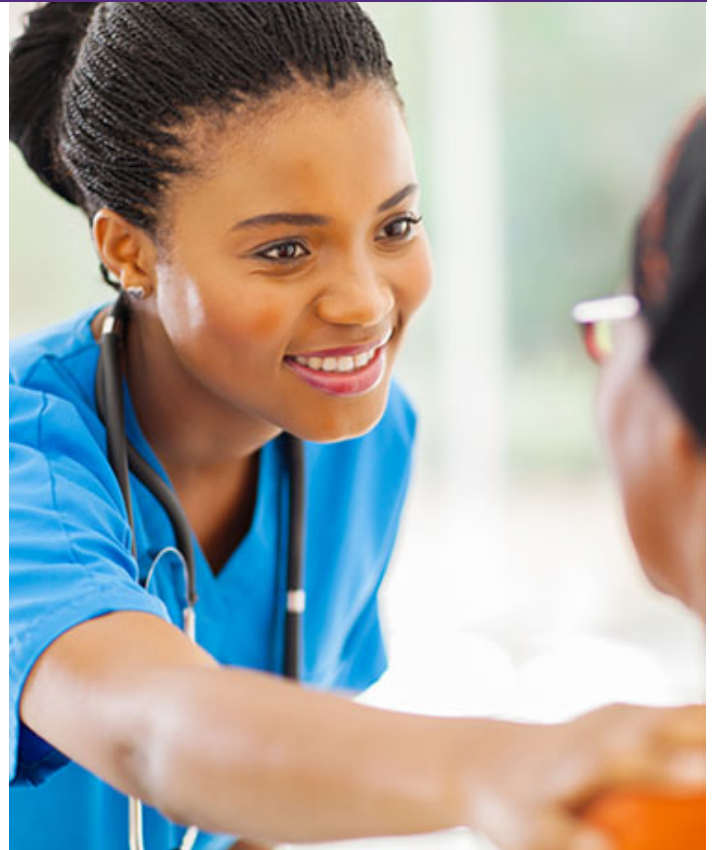
**For more information, please send inquiries via e-mail to [ESOL@montgomerycollege.edu](mailto:ESOL@montgomerycollege.edu)**

**Disability Services:** For disability related accommodations, please contact the Montgomery College Disability Support Services Office at 240-567-4118 at least four weeks before registration.

\*Disability access for this leased site is on the same side as the WorkSource Montgomery entrance. For more information regarding disability access at this location, please call 240-567-8841.

“Montgomery College is an academic institution that is committed to equal opportunity and fostering diversity among its student body, faculty, and staff”.

This program is funded by the MD Dept. of Labor, Licensing, and Regulation, the U.S. Dept. of Education, and the Montgomery County Government.



**ESOL for Healthcare Jobs  
Orientation and testing sessions:**

**December 18, 2017 at 6 p.m.**

**or**

**January 10, 2018 at 6 p.m.**

**\*Westfield South Office Building**

**11002 Veirs Mill Road**

**3rd Floor, Suite 306**

**Wheaton, MD 20902**

*(You do not need to preregister for these sessions)*