

# Montgomery College Organizational Chart

**Board of Trustees**

**President**  
**Dr. DeRionne Pollard**

**Chief Equity &  
Inclusion  
Officer**

S. Bland

**Chief  
Compliance  
Officer**

V. Duggan

**Chief Gov't  
Relations  
Officer**

S. Madden

**General  
Counsel**

T. Dietz

**Chief Strategy  
Officer**

S. Cain

## **Senior Vice Presidents**

**Academic  
Affairs**

S. Rai

**Administrative &  
Fiscal Services**

J. Wormack

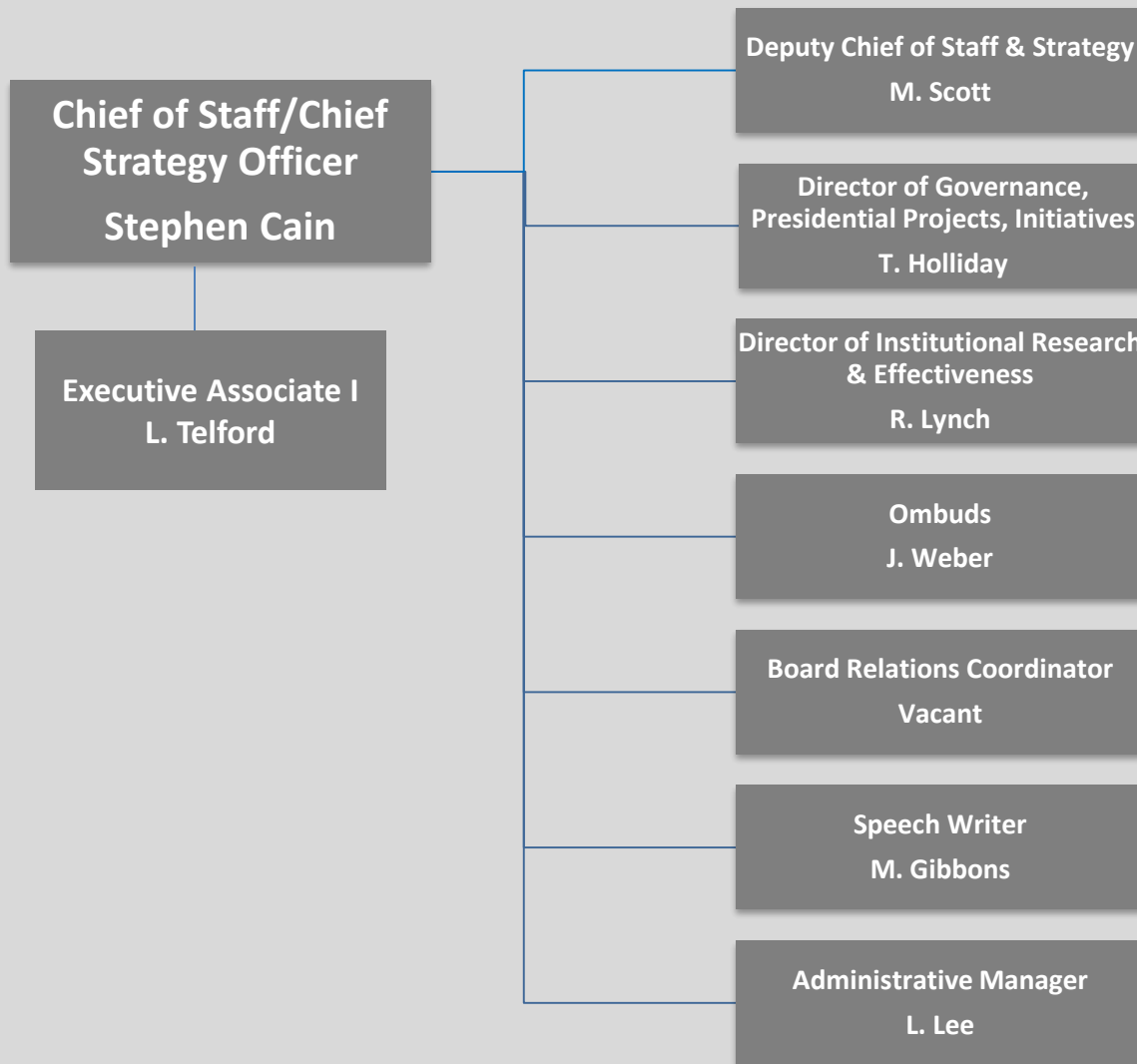
**Advancement &  
Community  
Engagement**

D. Sears

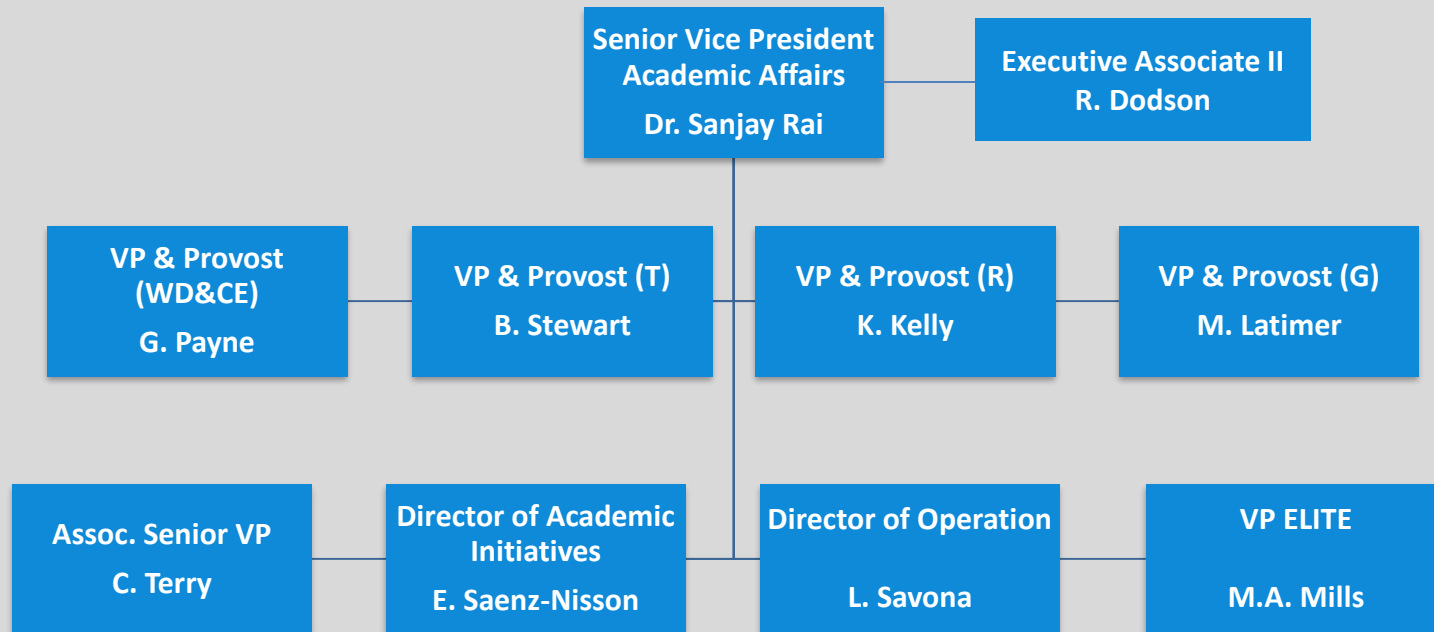
**Student Affairs**

M. Brown

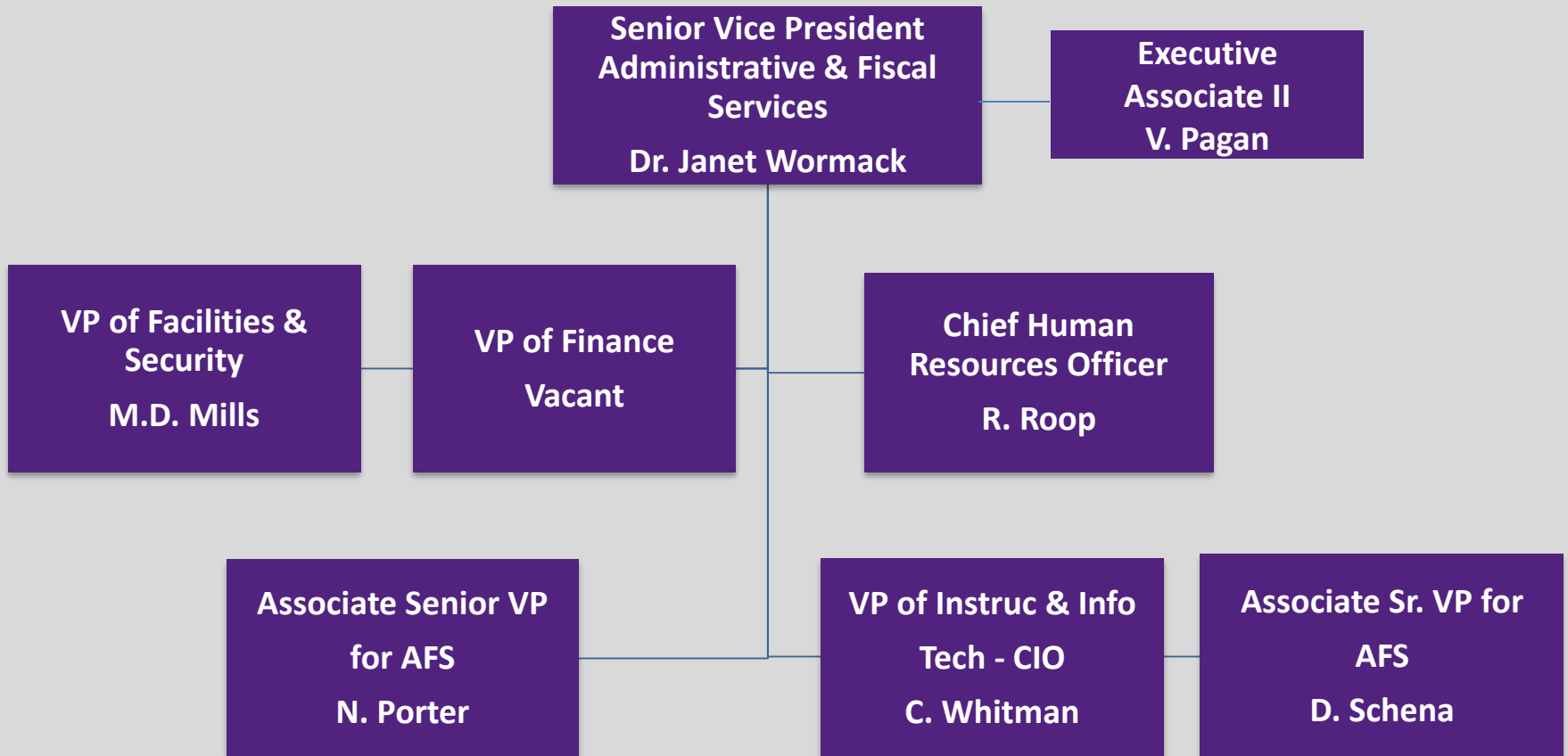
## Presidents Office - Chief of Staff



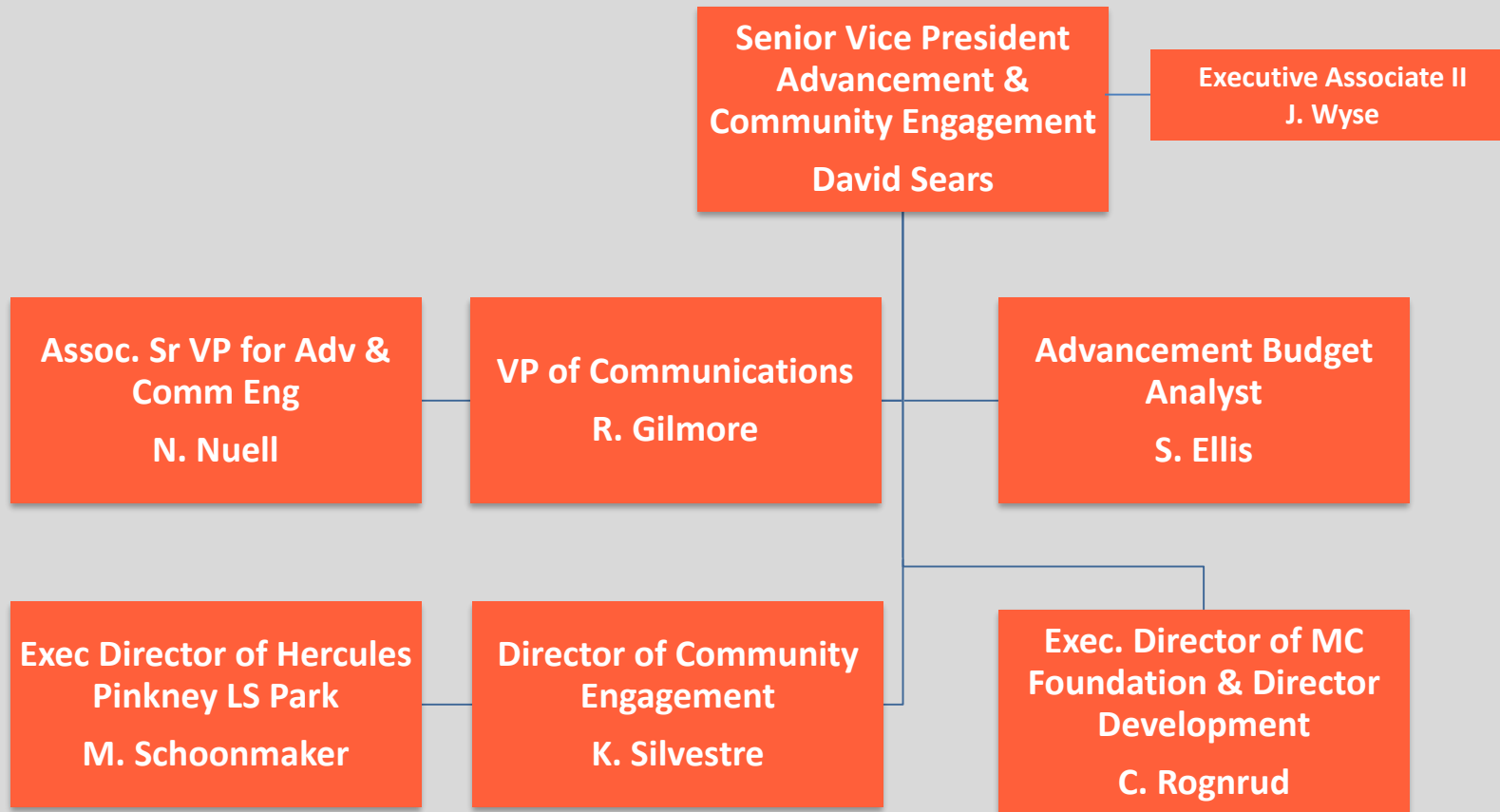
# Academic Affairs



# Administrative & Fiscal Services



# Advancement & Community Engagement



# Student Affairs

